

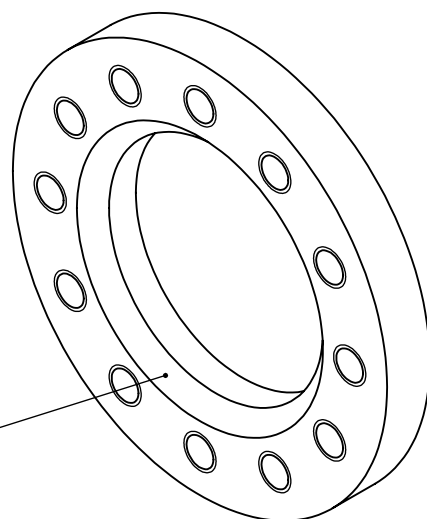
4

3

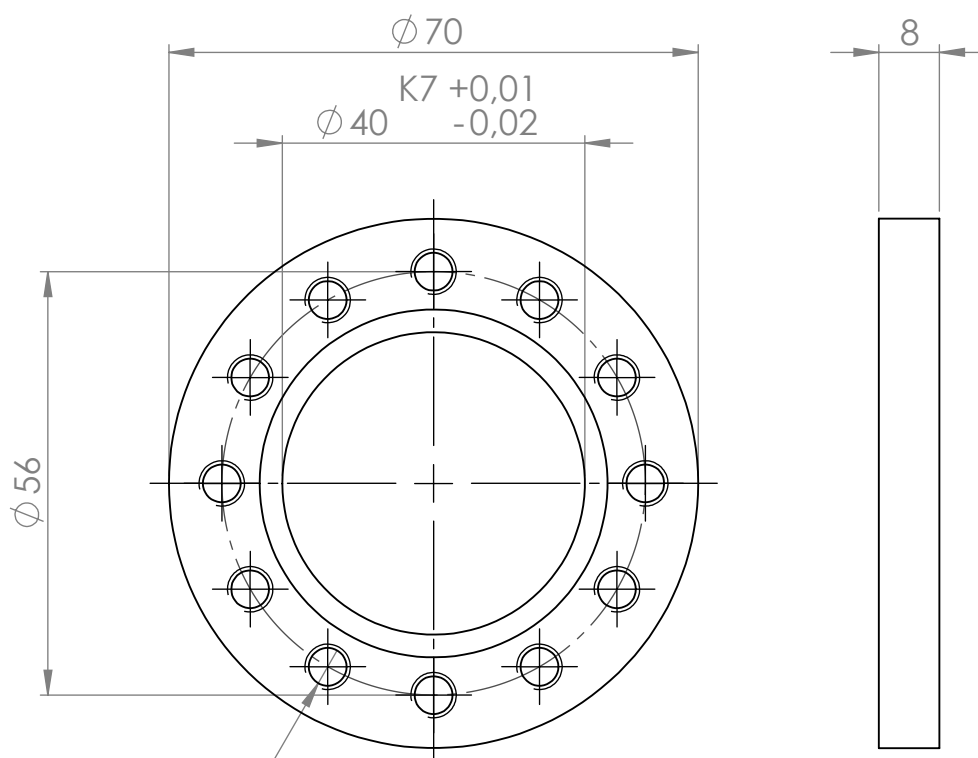
2

1

- Base part is a laser cut part.
- Material to be S235JR or stronger with good weldability
- Inner diameter and chamfer to be machined on a lathe has 2 mm extra material
- Holes to be drilled and tapped, position to be determined using either this drawing as a template, or spotting by a laser cutter



Welding Chamfer  
3 x 3 mm



12 x  $\phi$  5 THRU ALL  
M6 - 6H THRU ALL

Stock material: laser cut plate 8mm S235JR  
Drw. no: EXTPRO-1 1200.03-2 - 8mm - x1

Weight	142.40 g	Material	1.0037 (S235JR)		
Machine	Extruder Pro	Description	Barrel Inlet Flange		
Projection method:	First angle	Release date	Drawing no:	Rev.	
		1-4-2022	EXTPRO-1 1200.03-2	A	
General tolerances	Doc. type	Units unless specified	Sheet size	Scale	Sheet
Geometrical Tolerances: ISO 2768-m	Part	mm/g	A4	1:1	1/1
General surface finish: $\sqrt{6.4}$					



4

3

2

1